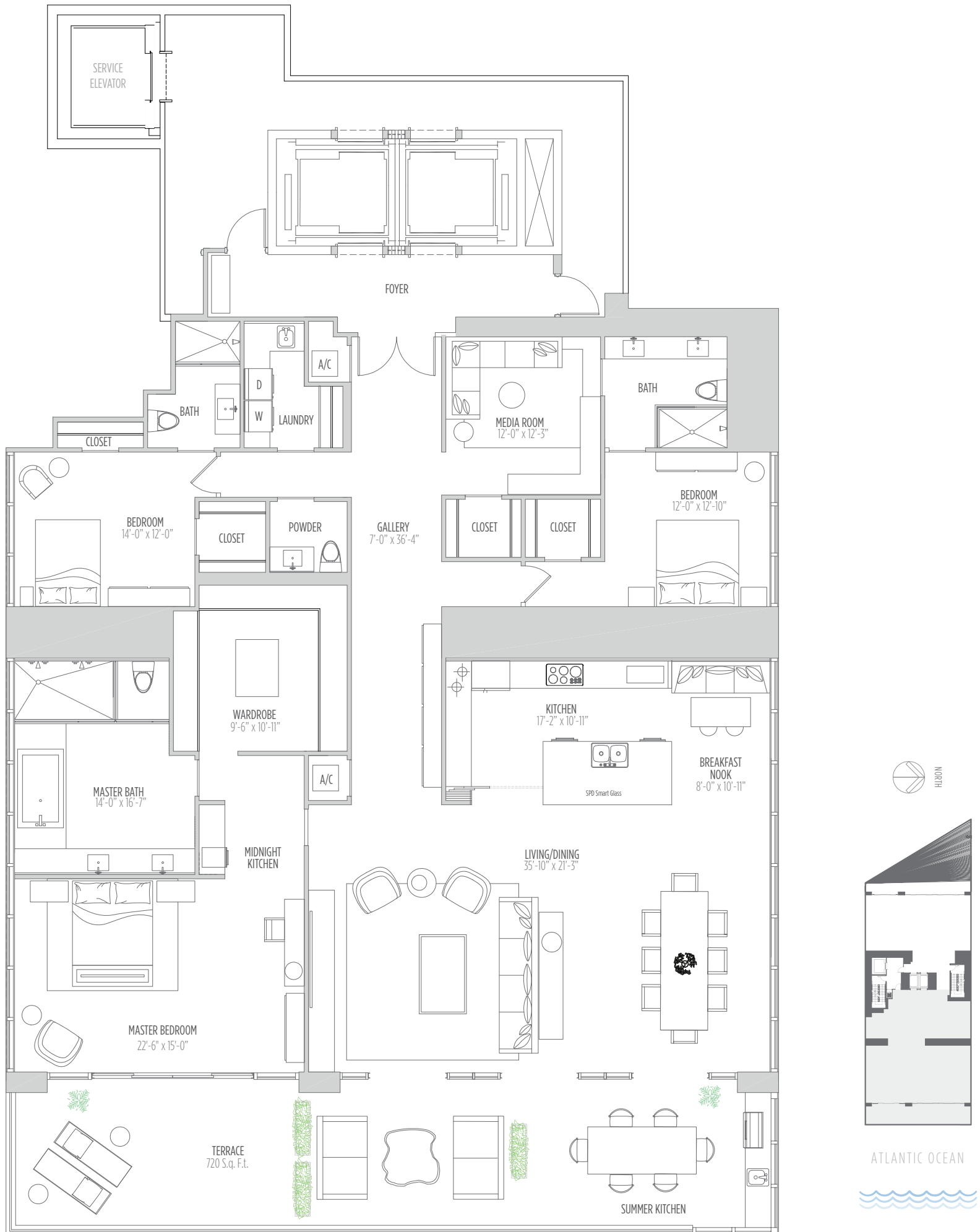


III USE

68 OCEANFRONT RESIDENCES

RESIDENCE 01 3 BEDROOMS | 3.5 BATHS | MEDIA ROOM

AC AREA: 3,635 SQ.FT. 338 M² | TERRACE: 720 SQ.FT. 67 M² | TOTAL: 4,355 SQ.FT. 405 M²



WEST

R E S I D E N C E S

IIIUSE

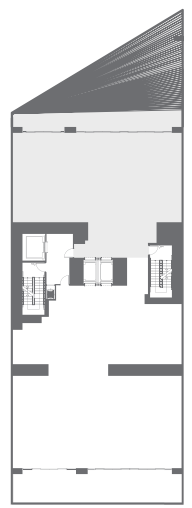
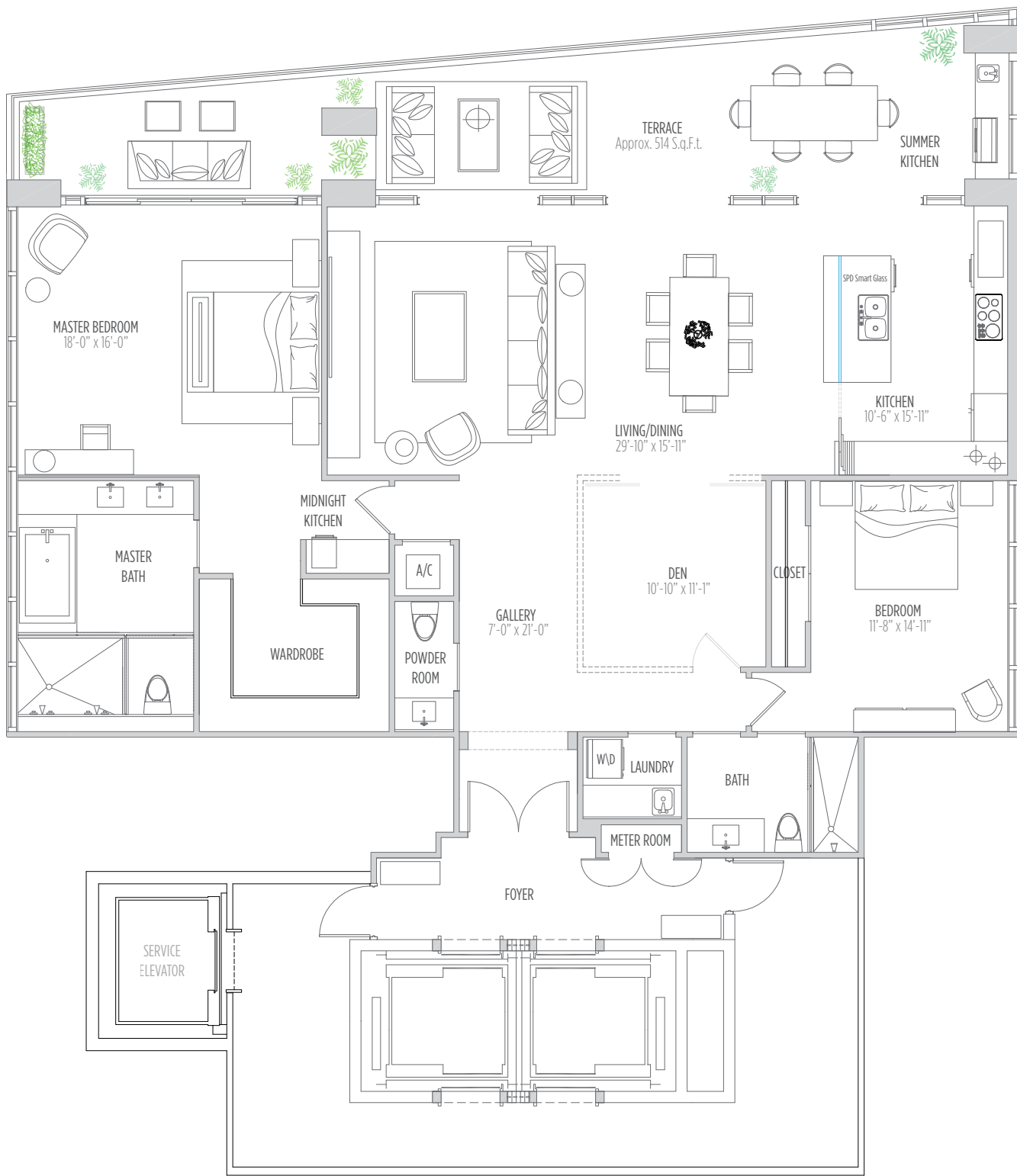
68 OCEANFRONT RESIDENCES

MUSE

68 OCEANFRONT RESIDENCES

RESIDENCE **2802** 2 BEDROOMS | 2.5 BATHS | DEN

AC AREA: 2,360 SQ.FT. 219 M² | **TERRACE:** 514 SQ.FT. 48 M² | **TOTAL:** 2,874 SQ.FT. 267 M²



ATLANTIC OCEAN

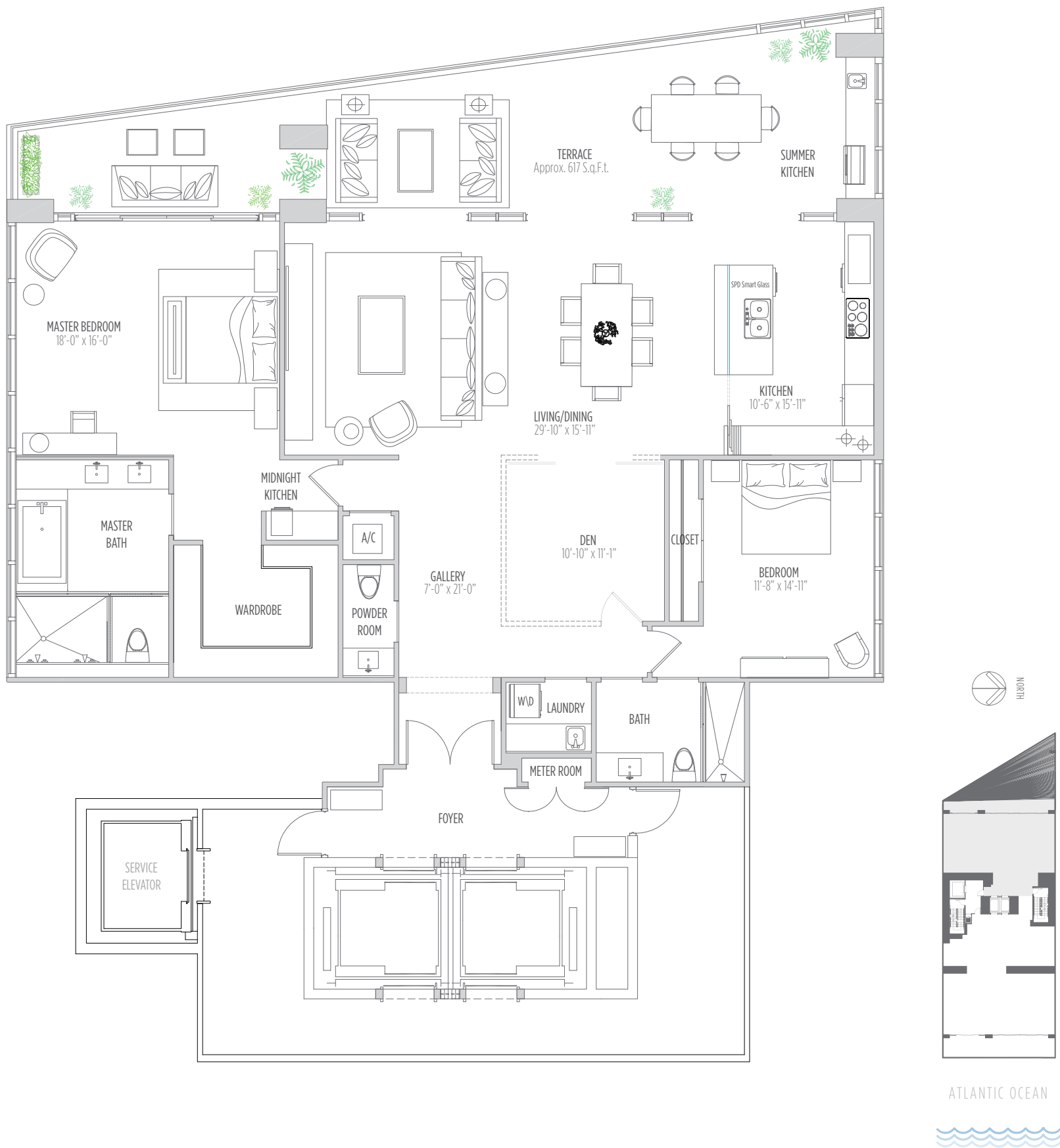


IIIUSE

68 OCEANFRONT RESIDENCES

RESIDENCE **3002** 2 BEDROOMS | 2.5 BATHS | DEN

AC AREA: 2,360 SQ.FT. 219 M² | **TERRACE:** 617 SQ.FT. 57 M² | **TOTAL:** 2,977 SQ.FT. 277 M²

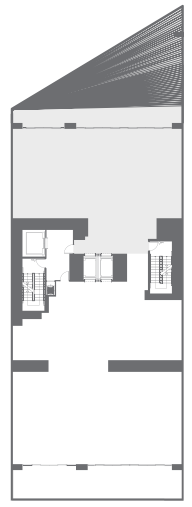
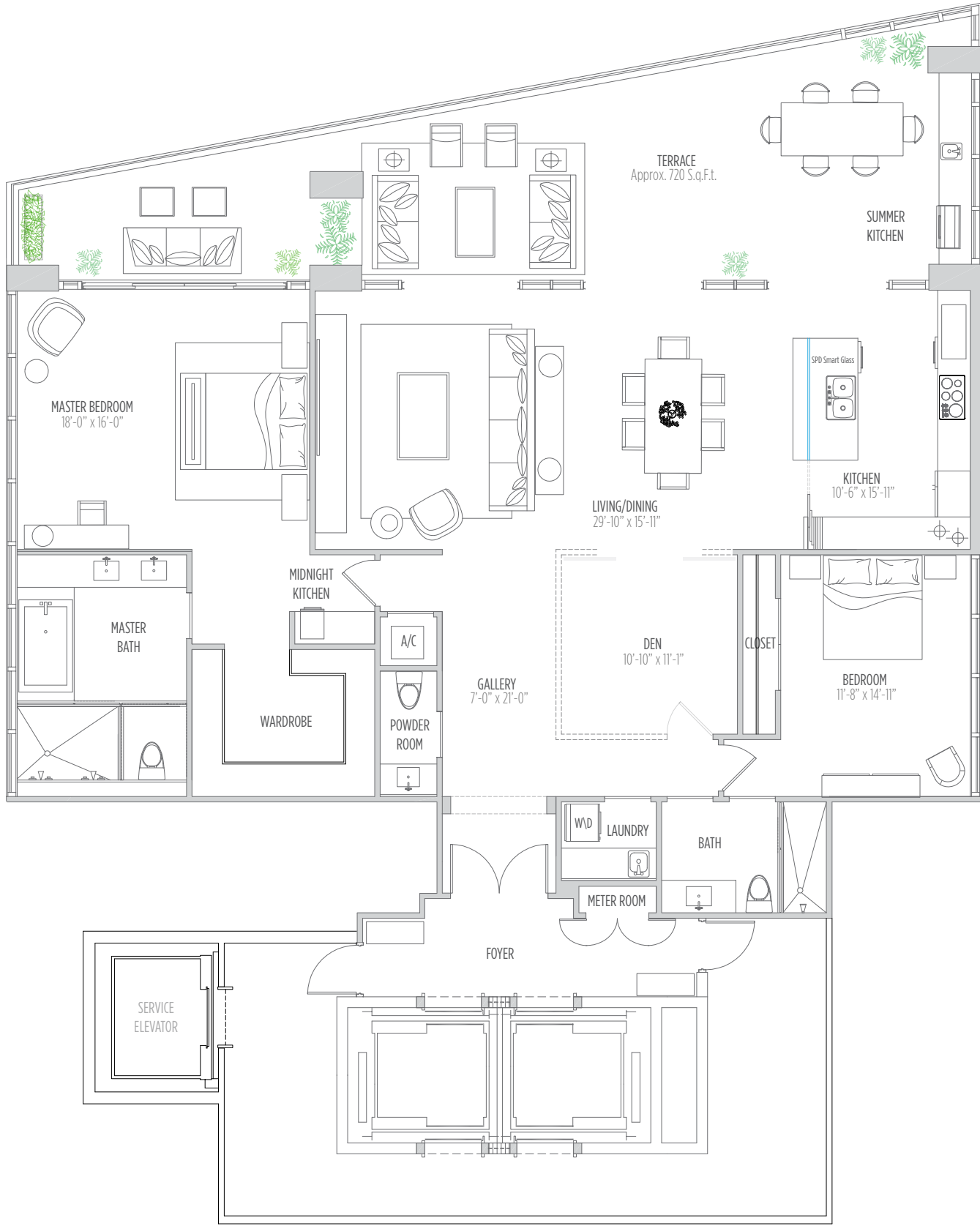


IIIUSE

68 OCEANFRONT RESIDENCES

RESIDENCE **3202** 2 BEDROOMS | 2.5 BATHS | DEN

AC AREA: 2,360 SQ.FT. 219 M² | **TERRACE:** 720 SQ.FT. 67 M² | **TOTAL:** 3,080 SQ.FT. 286 M²



ATLANTIC OCEAN

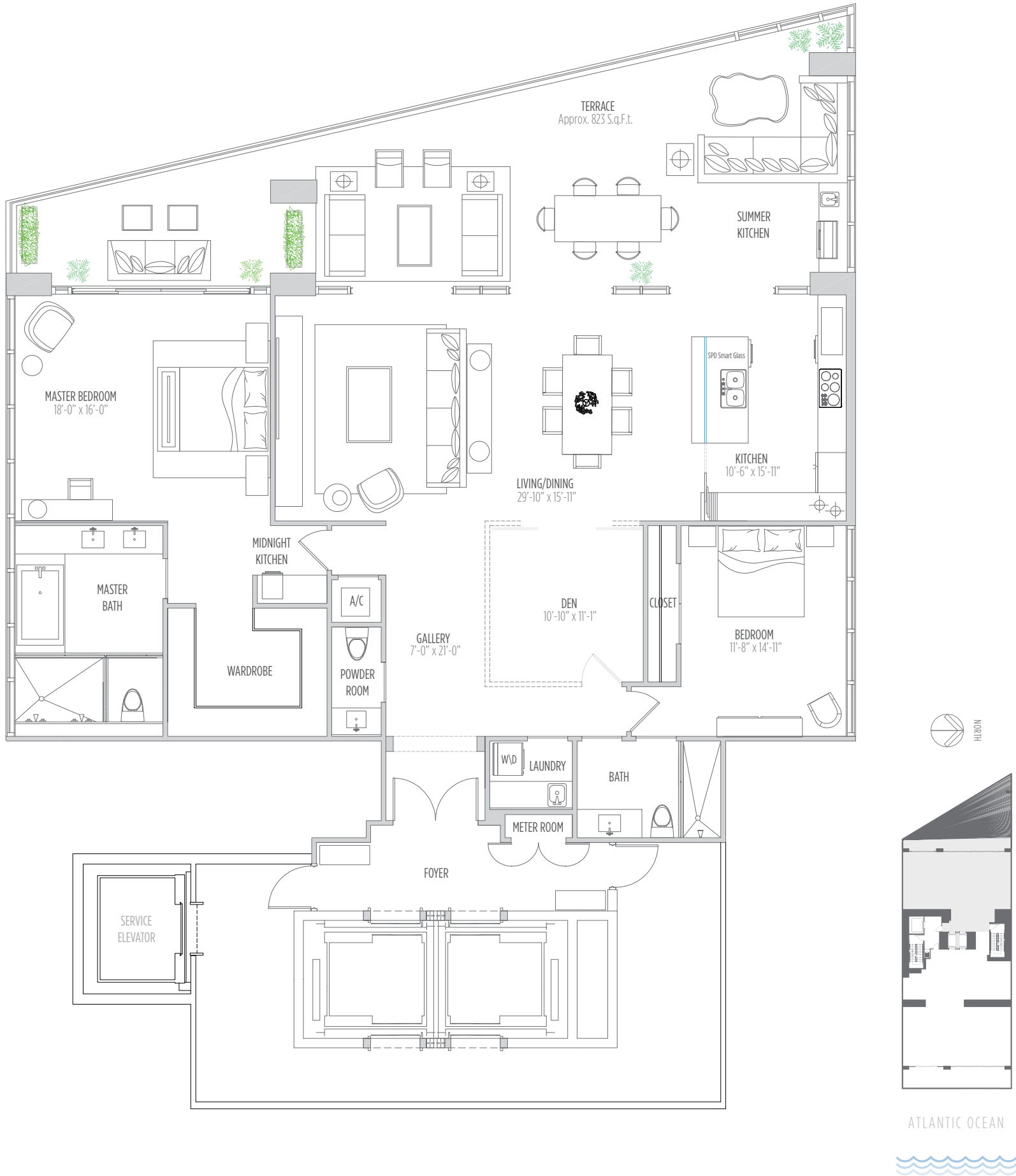
THESE DRAWINGS ARE CONCEPTUAL ONLY AND ARE FOR THE CONVENIENCE OF REFERENCE. THEY SHOULD NOT BE RELIED UPON AS REPRESENTATIONS, EXPRESS OR IMPLIED, OF THE FINAL DETAIL OF THE RESIDENCES. UNITS SHOWN ARE EXAMPLES OF UNIT TYPES AND MAY NOT DEPICT ACTUAL UNITS. STATED SQUARE FOOTAGES ARE RANGES FOR A PARTICULAR UNIT TYPE AND ARE MEASURED TO THE EXTERIOR BOUNDARIES OF THE EXTERIOR WALLS AND THE CENTERLINE OF INTERIOR DEMISING WALLS AND IN FACT VARY FROM THE AREA THAT WOULD BE DETERMINED BY USING THE DESCRIPTION AND DEFINITION OF THE "UNIT" SET FORTH IN THE DECLARATION (WHICH GENERALLY ONLY INCLUDES THE INTERIOR AIRSPACE BETWEEN THE PERIMETER WALLS AND EXCLUDES INTERIOR STRUCTURAL COMPONENTS). ALL DEPICTIONS OF APPLIANCES, PLUMBING FIXTURES, EQUIPMENT, COUNTERS, SOFFITS, FLOOR COVERINGS AND OTHER MATTERS OF DETAIL ARE CONCEPTUAL ONLY AND ARE NOT NECESSARILY INCLUDED IN EACH UNIT. CONSULT YOUR AGREEMENT AND THE PROSPECTUS FOR THE ITEMS INCLUDED WITH THE UNIT. DIMENSIONS AND SQUARE FOOTAGE ARE APPROXIMATE, WILL VARY WITH SPECIFIC UNIT TYPE, AND MAY VARY WITH ACTUAL CONSTRUCTION. ADDITIONALLY, MEASUREMENTS OF ROOMS SET FORTH ON ANY FLOOR PLAN ARE NOMINAL AND GENERALLY TAKEN AT THE GREATEST POINTS OF EACH GIVEN ROOM (AS IF THE ROOM WERE A PERFECT RECTANGLE), WITHOUT REGARD FOR ANY CUTOUTS. UNIT ORIENTATION AND WINDOWS (INCLUDING NUMBER, SIZE, ORIENTATION AND AWNINGS), BALCONY/LANAI (INCLUDING CONFIGURATION, SIZE AND RAILING/BALUSTRADE), STRUCTURE AND MECHANICAL CHASES MAY VARY. THE DEVELOPER EXPRESSLY RESERVES THE RIGHT TO MAKE MODIFICATIONS, REVISIONS, AND CHANGES IT DEEMS DESIRABLE IN ITS SOLE AND ABSOLUTE DISCRETION AND WITHOUT NOTICE.

IIIUSE

68 OCEANFRONT RESIDENCES

RESIDENCE **3402** 2 BEDROOMS | 2.5 BATHS | DEN

AC AREA: 2,360 SQ.FT. 219 M² | **TERRACE:** 823 SQ.FT. 76 M² | **TOTAL:** 3,183 SQ.FT. 296 M²



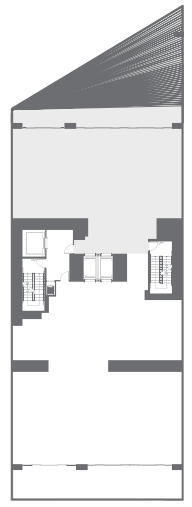
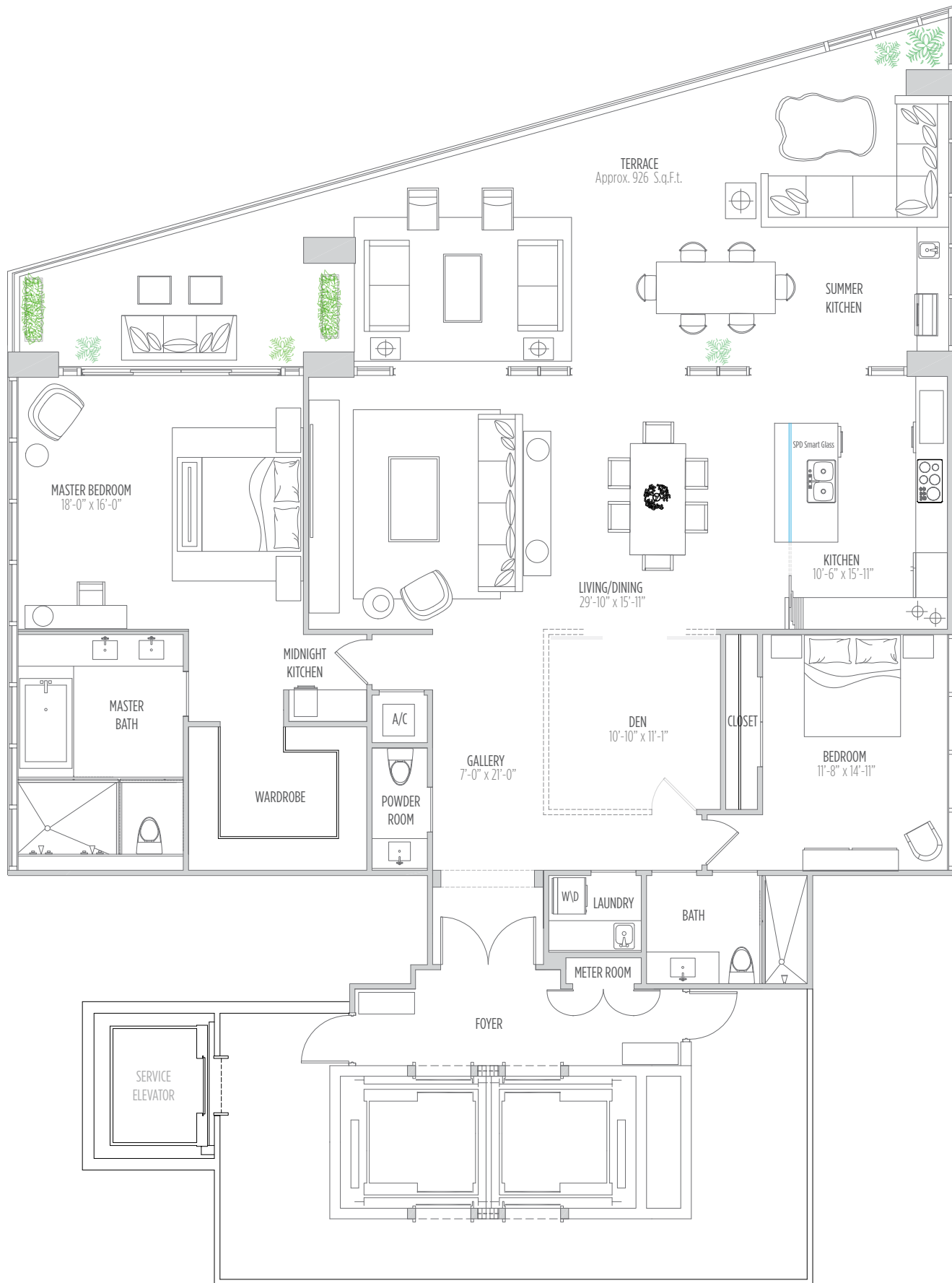
THESE DRAWINGS ARE CONCEPTUAL ONLY AND ARE FOR THE CONVENIENCE OF REFERENCE. THEY SHOULD NOT BE RELIED UPON AS REPRESENTATIONS, EXPRESS OR IMPLIED, OF THE FINAL DETAIL OF THE RESIDENCES. UNITS SHOWN ARE EXAMPLES OF UNIT TYPES AND MAY NOT DEPICT ACTUAL UNITS. STATED SQUARE FOOTAGES ARE RANGES FOR A PARTICULAR UNIT TYPE AND ARE MEASURED TO THE EXTERIOR BOUNDARIES OF THE EXTERIOR WALLS AND THE CENTERLINE OF INTERIOR DEMISING WALLS AND IN FACT VARY FROM THE AREA THAT WOULD BE DETERMINED BY USING THE DESCRIPTION AND DEFINITION OF THE "UNIT" SET FORTH IN THE DECLARATION (WHICH GENERALLY ONLY INCLUDES THE INTERIOR AIRSPACE BETWEEN THE PERIMETER WALLS AND EXCLUDES INTERIOR STRUCTURAL COMPONENTS). ALL DEPICTIONS OF APPLIANCES, PLUMBING FIXTURES, EQUIPMENT, COUNTERS, SOFFITS, FLOOR COVERINGS AND OTHER MATTERS OF DETAIL ARE CONCEPTUAL ONLY AND ARE NOT NECESSARILY INCLUDED IN EACH UNIT. CONSULT YOUR AGREEMENT AND THE PROSPECTUS FOR THE ITEMS INCLUDED WITH THE UNIT. DIMENSIONS AND SQUARE FOOTAGE ARE APPROXIMATE, WILL VARY WITH SPECIFIC UNIT TYPE, AND MAY VARY WITH ACTUAL CONSTRUCTION. ADDITIONALLY, MEASUREMENTS OF ROOMS SET FORTH ON ANY FLOOR PLAN ARE NOMINAL AND GENERALLY TAKEN AT THE GREATEST POINTS OF EACH GIVEN ROOM (AS IF THE ROOM WERE A PERFECT RECTANGLE), WITHOUT REGARD FOR ANY CUTOUTS, UNIT ORIENTATION AND WINDOWS (INCLUDING NUMBER, SIZE, ORIENTATION AND AWNINGS), BALCONY/LANAI (INCLUDING CONFIGURATION, SIZE AND RAILING/BALUSTRADE), STRUCTURE AND MECHANICAL CHASES MAY VARY. THE DEVELOPER EXPRESSLY RESERVES THE RIGHT TO MAKE MODIFICATIONS, REVISIONS, AND CHANGES IT DEEMS DESIRABLE IN ITS SOLE AND ABSOLUTE DISCRETION AND WITHOUT NOTICE.

III USE

68 OCEANFRONT RESIDENCES

RESIDENCE **3602** 2 BEDROOMS | 2.5 BATHS | DEN

AC AREA: 2,360 SQ.FT. 219 M² | **TERRACE:** 926 SQ.FT. 86 M² | **TOTAL:** 3,286 SQ.FT. 305 M²



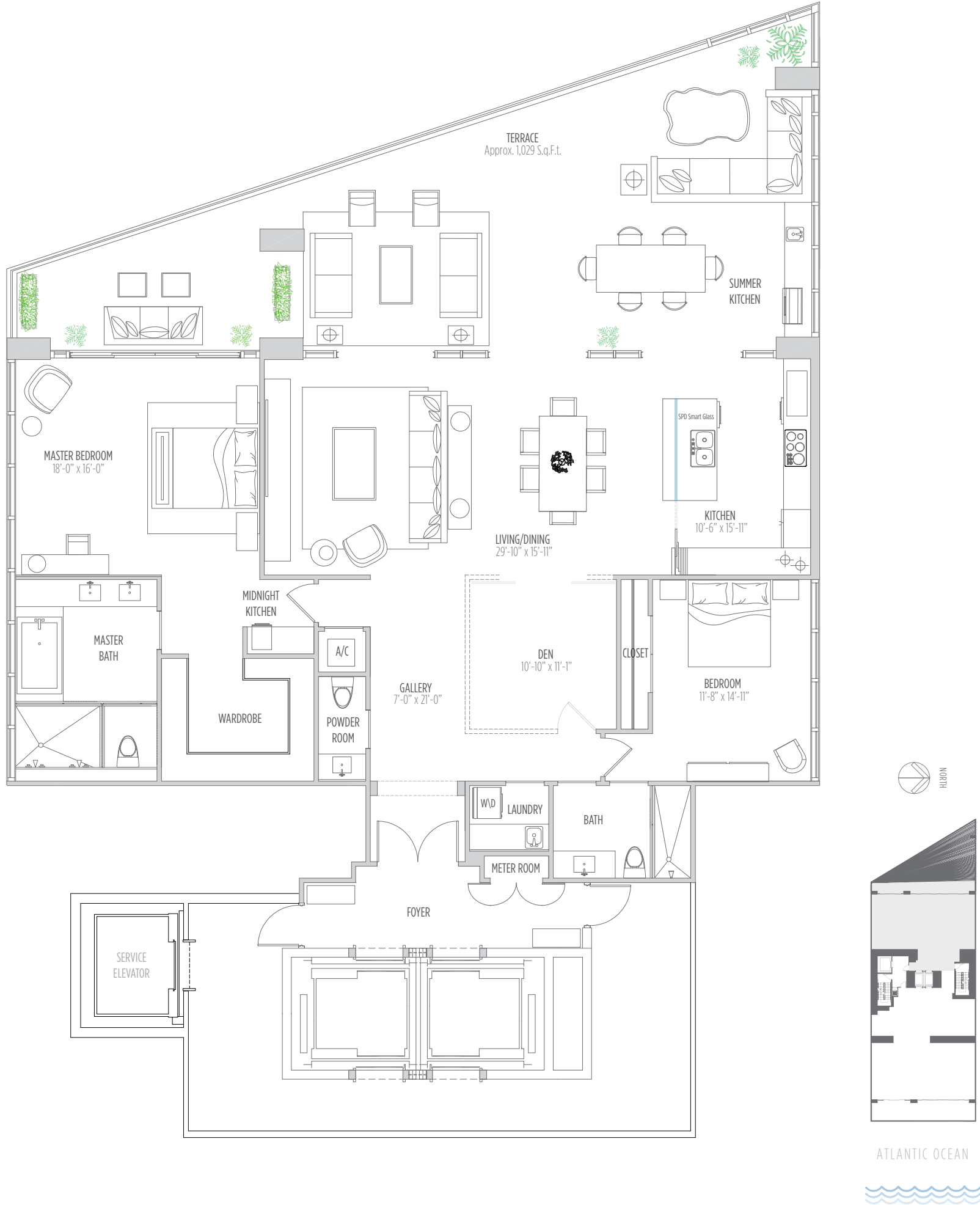
ATLANTIC OCEAN

IIIUSE

68 OCEANFRONT RESIDENCES

RESIDENCE **3802** 2 BEDROOMS | 2.5 BATHS | DEN

AC AREA: 2,360 S.Q.F.T. 219 M² | **TERRACE:** 1,029 S.Q.F.T. 96 M² | **TOTAL:** 3,389 S.Q.F.T. 315 M²



IIIUSE

68 OCEANFRONT RESIDENCES

RESIDENCE 4002 2 BEDROOMS | 2.5 BATHS | DEN

AC AREA: 2,360 SQ.FT. 219 M² | TERRACE: 1,132 SQ.FT. 105 M² | TOTAL: 3,492 SQ.FT. 324 M²



MUSE

68 OCEANFRONT RESIDENCES

RESIDENCE 4202 2 BEDROOMS | 2.5 BATHS | DEN

AC AREA: 2,360 SQ.FT. 219 M² | TERRACE: 1,235 SQ.FT. 115 M² | TOTAL: 3,595 SQ.FT. 334 M²

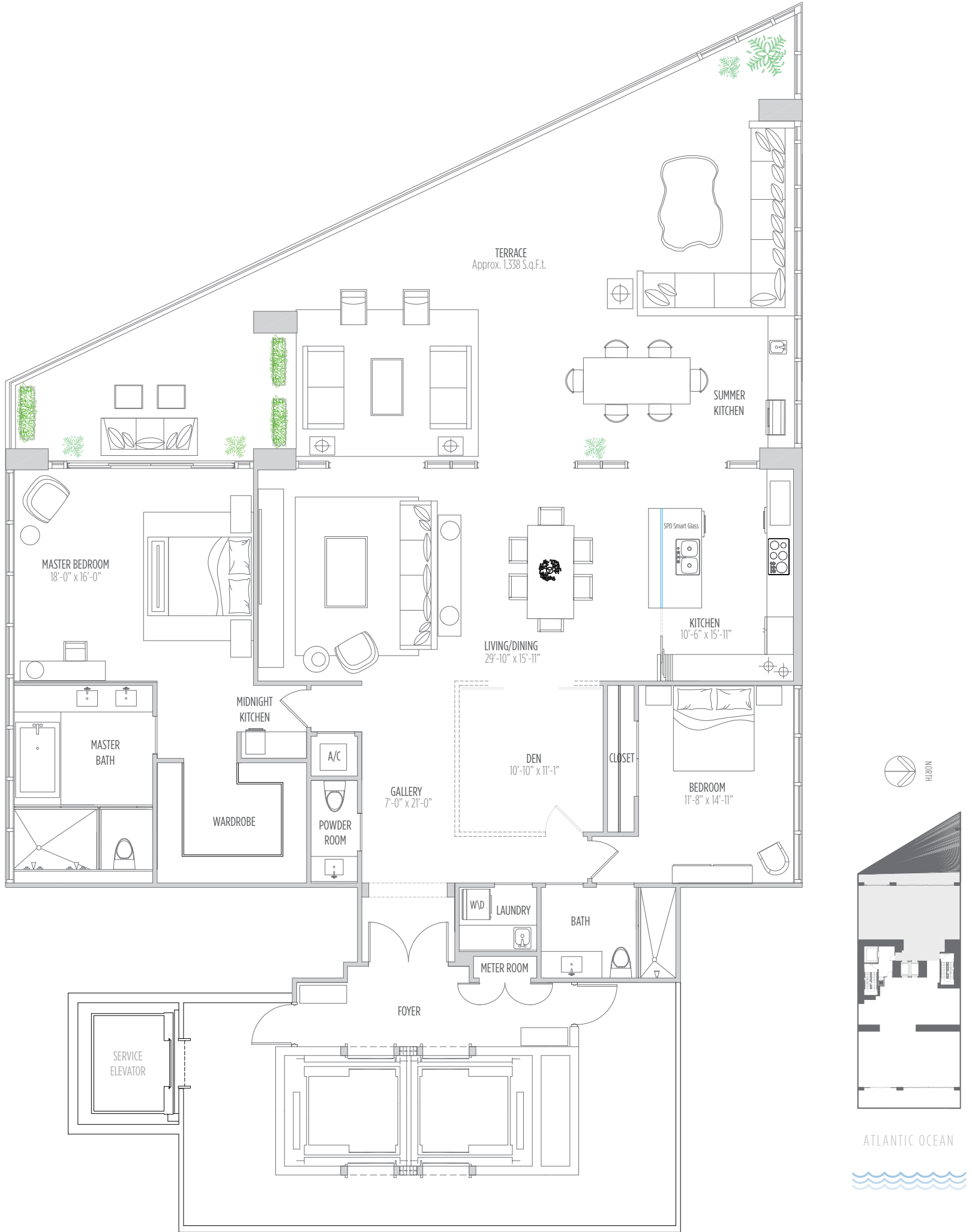


MUSE

68 OCEANFRONT RESIDENCES

RESIDENCE **4402** 2 BEDROOMS | 2.5 BATHS | DEN

AC AREA: 2,360 SQ.FT. 219 M² | **TERRACE:** 1,338 SQ.FT. 124 M² | **TOTAL:** 3,698 SQ.FT. 344 M²



IIIUSE

68 OCEANFRONT RESIDENCES

RESIDENCE **4602** 2 BEDROOMS | 2.5 BATHS | DEN

AC AREA: 2,360 SQ.FT. 219 M² | **TERRACE:** 1,441 SQ.FT. 134 M² | **TOTAL:** 3,801 SQ.FT. 353 M²



THESE DRAWINGS ARE CONCEPTUAL ONLY AND ARE FOR THE CONVENIENCE OF REFERENCE. THEY SHOULD NOT BE RELIED UPON AS REPRESENTATIONS, EXPRESS OR IMPLIED, OF THE FINAL DETAIL OF THE RESIDENCES. UNITS SHOWN ARE EXAMPLES OF UNIT TYPES AND MAY NOT DEPICT ACTUAL UNITS. STATED SQUARE FOOTAGES ARE RANGES FOR A PARTICULAR UNIT TYPE AND ARE MEASURED TO THE EXTERIOR BOUNDARIES OF THE EXTERIOR WALLS AND THE CENTERLINE OF INTERIOR DEMISING WALLS AND IN FACT VARY FROM THE AREA THAT WOULD BE DETERMINED BY USING THE DESCRIPTION AND DEFINITION OF THE "UNIT" SET FORTH IN THE DECLARATION (WHICH GENERALLY ONLY INCLUDES THE INTERIOR AIRSPACE BETWEEN THE PERIMETER WALLS AND EXCLUDES INTERIOR STRUCTURAL COMPONENTS). ALL DEPICTIONS OF APPLIANCES, PLUMBING FIXTURES, EQUIPMENT, COUNTERS, SOFFITS, FLOOR COVERINGS AND OTHER MATTERS OF DETAIL ARE CONCEPTUAL ONLY AND ARE NOT NECESSARILY INCLUDED IN EACH UNIT. CONSULT YOUR AGREEMENT AND THE PROSPECTUS FOR THE ITEMS INCLUDED WITH THE UNIT. DIMENSIONS AND SQUARE FOOTAGE ARE APPROXIMATE, WILL VARY WITH SPECIFIC UNIT TYPE, AND MAY VARY WITH ACTUAL CONSTRUCTION. ADDITIONALLY, MEASUREMENTS OF ROOMS SET FORTH ON ANY FLOOR PLAN ARE NOMINAL AND GENERALLY TAKEN AT THE GREATEST POINTS OF EACH GIVEN ROOM (AS IF THE ROOM WERE A PERFECT RECTANGLE), WITHOUT REGARD FOR ANY CUTOUTS. UNIT ORIENTATION AND WINDOWS (INCLUDING NUMBER, SIZE, ORIENTATION AND AWNINGS), BALCONY/LANAI (INCLUDING CONFIGURATION, SIZE AND RAILING/BALUSTRADE), STRUCTURE AND MECHANICAL CHASES MAY VARY. THE DEVELOPER EXPRESSLY RESERVES THE RIGHT TO MAKE MODIFICATIONS, REVISIONS, AND CHANGES IT DEEMS DESIRABLE IN ITS SOLE AND ABSOLUTE DISCRETION AND WITHOUT NOTICE.